

# LOGISTIC STRAPS

Kinedyne logistic straps are designed to take care of most interior van loading requirements and are tagged to comply with North American Cargo Securement Standards. All straps have a 4' fixed end as standard. Adjustable ends are sewn captivated.

**WARNING:** Series E, A or F fittings are designed for use with Kinedyne Logistic Track. Load ratings may be reduced when used with other tracks or if the track fitting is not positively engaged. Your cargo control system is only as strong as its weakest link. All ratings for series E and A fittings are based on use with Kinedyne 11 gauge track. NOTE: Several types of Kinedyne track are not made of 11 gauge steel, contact Customer Service for specifications by part number.



12' - GOLD



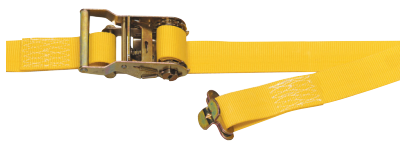
16' - GRAY



20' - BLUE

LENGTHS ARE COLOR CODED:

## 1-3/4" LOGISTIC STRAPS WITH 811 RATCHET BUCKLE



37D1218	12'
37D1618	16'
37D2018	20'

With 1802 Webbing  
End Hardware: C1831 1" Hole F-Track Fitting  
Working Load Limit: 670 lbs./305 kgs.

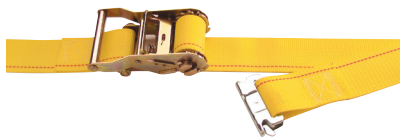
## 1-3/4" LOGISTIC STRAP WITH 910 CAM BUCKLE



81D1218	12'
81D1618	16'
81D2018	20'

With 1802 Webbing  
End Hardware: C1831 1" Hole F-Track Fitting  
Working Load Limit: 670 lbs./305 kgs.

## 2" LOGISTIC STRAPS WITH 811 RATCHET BUCKLE



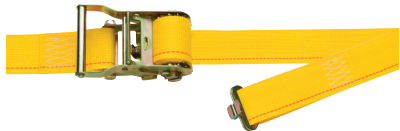
641201	12'
641601	16'
642001	20'

With 4900 Webbing  
End Hardware: Series E or A FE8306-1 Spring Fitting  
Working Load Limit: 1,000 lbs./455 kgs.



641202	12'
641602	16'
642002	20'

With 4900 Webbing  
End Hardware: Series E or A 43020-1 3-Piece Fitting  
Working Load Limit: 1,000 lbs./455 kgs.



641203	12'
641603	16'
642003	20'

With 4900 Webbing  
End Hardware: 1831 3/4" Hole F-Track Fitting  
Working Load Limit: 500 lbs./230 kgs.



641204	12'
641604	16'
642004	20'

With 4900 Webbing  
End Hardware: 1005 Narrow Hook  
Working Load Limit: 500 lbs./230 kgs.



641215	12'
641615	16'
642015	20'

With 4900 Webbing  
End Hardware: C1823 1" Hole F-Track Fitting  
Working Load Limit: 670 lbs./305 kgs.



641235	12'
641635	16'
642035	20'

With 4900 Webbing  
End Hardware: Series F FE8427-1 Plate Trailer Hook  
Working Load Limit: 735 lbs./335 kgs.



**2" LOGISTIC STRAPS WITH 910 CAM BUCKLE**

651201 12'  
651601 16'  
652001 20'

With 4900 Webbing  
End Hardware: Series E or A FE8306-1 Spring Fitting  
Working Load Limit: 835 lbs./380 kgs.



651202 12'  
651602 16'

With 4900 Webbing  
End Hardware: Series E or A 43020-1 3-Piece Fitting  
Working Load Limit: 835 lbs./380 kgs.



651203 12'  
651603 16'

With 4900 Webbing  
End Hardware: 1831 3/4" Hole F-Track Fitting  
Working Load Limit: 500 lbs./230 kgs.



651204 12'  
651604 16'  
652004 20'

With 4900 Webbing  
End Hardware: 1005 Narrow Hook  
Working Load Limit: 500 lbs./230 kgs.



651235 12'  
651635 16'  
652035 20'

With 4900 Webbing  
End Hardware: FE8427-1 F-Track Hook  
Working Load Limit: 735 lbs./335 kgs.

Custom stenciling available on most standard strap assemblies and bulk webbing. Contact Customer Service for price and delivery.

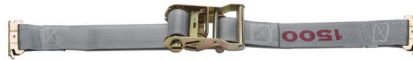


The K-FORCE logistic straps have a working load limit (WLL) of 1500 pounds, 50 percent greater than the traditional 1,000-pound rating.

**2" LOGISTIC STRAPS K-FORCE**

931211

12' Gold Webbing with E-Fitting  
Working Load Limit: 1,500 lbs./680 kgs.



931611

12' Grey Webbing with E-Fitting  
Working Load Limit: 1,500 lbs./680 kgs.



932011

12' Blue Webbing with E-Fitting  
Working Load Limit: 1,500 lbs./680 kgs.

## LOGISTIC TRACK

Kinedyne offers a complete line of Series E, A, F and L track designed to provide the attachment point for a wide variety of interior van cargo control systems.

Kinedyne logistic track will accept all end fittings, sockets, beams and bars designed for use in series E, A, F and L track.

Series E, A and F track are offered standard in 10' (3 m) length with special lengths available upon request. Minimum order may be required.

Track can be attached with screws, rivets or welding. Specific fastener size and/or mounting method should be determined by the vehicle manufacturer or a qualified installer. Care should be taken to ensure that installation environments and materials do not create a potential for corrosion.

L Track is the most commonly used floor anchoring product in vehicle conversions (layout/configuration). Its ease of installation, light weight and superior strength make it a natural choice for anchoring wheelchair, motorcycle, snowmobile or ATV securements, seats to vehicle floors, and product to walls of converted vans.

Kinedyne Medium-Duty L Track is made from 6061-T6 or equivalent aluminum alloy and is offered in 100" (2.5 m) standard lengths, pre-drilled every 4 inches.

Customized special length track is available. Contact Customer Service for more information about our special order products.

Logistic Track must be attached to securing points of equal or greater strength to maintain the established working load limits of associated track products.

**WARNING:** Welding galvanized material will form toxic fumes. Welding shall be done with adequate ventilation.

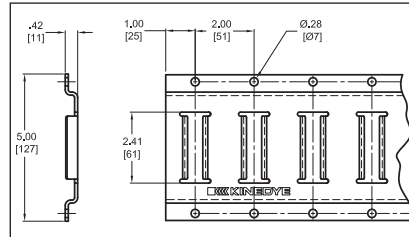
### SERIES E TRACK HORIZONTAL



43001



43002  
43002-060



**Material:** High strength steel; 12 gauge  
**Minimum Yield:** 50,000 psi.  
**Finish:** Galvanized  
**Weight:** 15.10 lbs./6.86 kgs.  
**Length:** 10 ft./3 m

**Material:** High strength steel; 12 gauge  
**Minimum Yield:** 50,000 psi.  
**Finish:** Gray, Powder Coat  
**Weight:** 15.2 lbs./6.9 kgs.  
**Length:** 10 ft./3 m

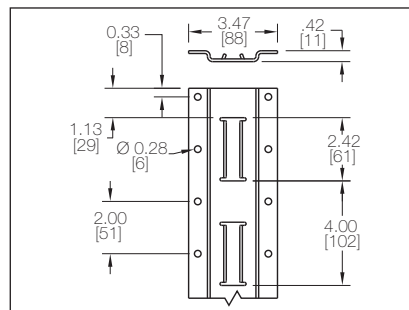
**43002-060**  
**Weight:** 7.8 lbs./3.54 kgs.  
**Length:** 5 ft./1.5 m

**WARNING:** Welding galvanized material will form toxic fumes. Welding shall be done with adequate ventilation.

### SERIES E TRACK VERTICAL



2019  
2019-060

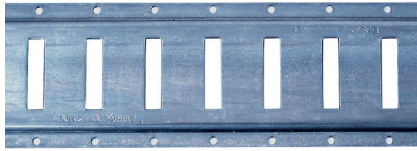


**Material:** High strength steel; 11 gauge  
**Minimum Yield:** 50,000 psi.  
**Finish:** Gray, Powder Coat  
**Weight:** 13.0 lbs./5.9 kgs.  
**Length:** 10 ft./3 m

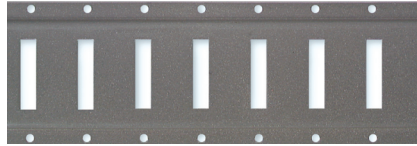
**2019-060**  
**Weight:** 6.5 lbs./3.0 kgs.  
**Length:** 5.0 ft./1.5 m.



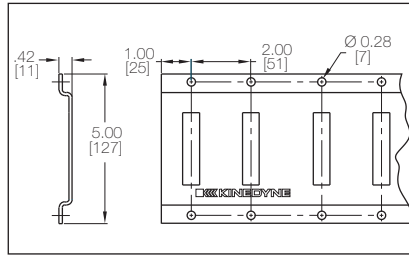
## SERIES A TRACK HORIZONTAL



43004



43003



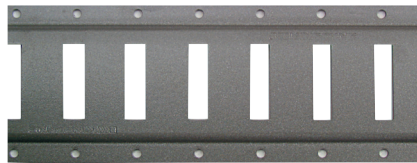
**Material:** High strength steel; 12 gauge  
**Minimum Yield:** 50,000 psi.  
**Finish:** Galvanized  
**Weight:** 15.5 lbs./7.0 kgs.  
**Length:** 10 ft./3 m

**Material:** High strength steel; 12 gauge  
**Minimum Yield:** 50,000 psi.  
**Finish:** Gray, Powder Coat  
**Weight:** 15.5 lbs./7.0 kgs.  
**Length:** 10 ft./3 m

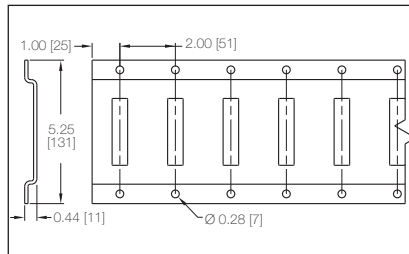


**WARNING:** Welding galvanized material will form toxic fumes. Welding shall be done with adequate ventilation.

## HEAVY-DUTY SERIES A TRACK HORIZONTAL



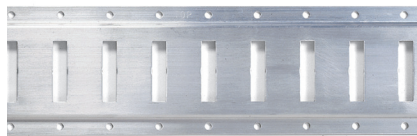
FE702-01  
FE702-01-060



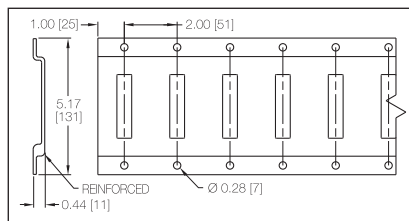
**Material:** High strength steel; 11 gauge  
**Minimum Yield:** 50,000 psi.  
**Finish:** Gray, Powder Coat  
**Weight:** 18.5 lbs./8.4 kgs.  
**Length:** 10 ft./3 m

**FE702-01-060**  
**Weight:** 9.6 lbs./4.4 kgs.  
**Length:** 5.0 ft./1.5 m.

## ALUMINUM SERIES A TRACK HORIZONTAL



FE725-01

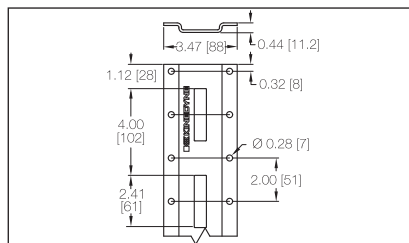


**Material:** Aluminum  
**Minimum Yield:** 37,000 psi.  
**Finish:** Natural  
**Weight:** 8.0 lbs./3.6 kgs.  
**Length:** 10 ft./3 m

## SERIES A TRACK VERTICAL



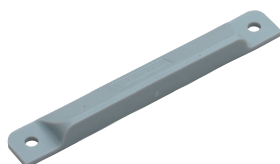
2025  
2025-060



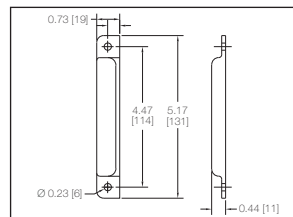
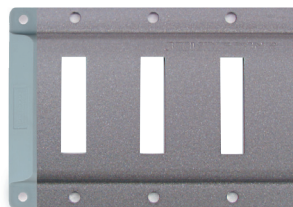
**Material:** High strength steel; 11 gauge  
**Minimum Yield:** 50,000 psi.  
**Finish:** Gray, Powder Coat  
**Weight:** 13.0 lbs./5.9 kgs.  
**Length:** 10 ft./3 m

**2025-060**  
**Weight:** 6.6 lbs./3.0 kgs.  
**Length:** 5 ft./1.5 m

## SERIES E OR A END CAPS



8730



**Material:** Gray plastic  
**Weight:** 0.02 lbs./0.009 kgs.

For use with horizontal E or A track.

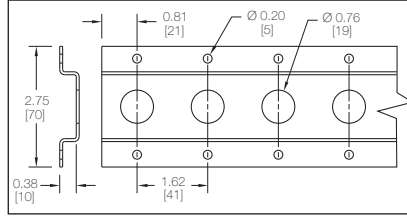


SEE WARNINGS ON PAGE 21 • VOIR LES AVERTISSEMENTS EN PAGE 22 • VÉASE LAS ADVERTENCIAS EN LA PÁGINA 23

**3/4" HOLE – SERIES F TRACK HORIZONTAL OR VERTICAL**



2005



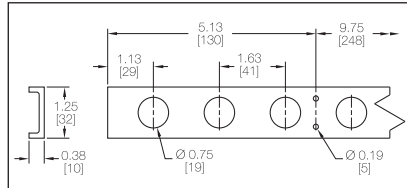
**Material:** High strength steel; 15 gauge  
**Finish:** Galvanized  
**Weight:** 6.5 lbs./3.0 kgs.  
**Length:** 10 ft./3 m

**WARNING:** Welding galvanized material will form toxic fumes. Welding shall be done with adequate ventilation.

**3/4" HOLE – ALUMINUM SERIES F TRACK FOR FLUSH MOUNTING IN FLOOR**



2005A

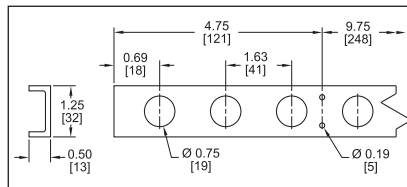


**Material:** Aluminum  
**Finish:** Natural  
**Weight:** 1.6 lbs./0.7 kgs.  
**Length:** 7.5 ft./2.3 m

**3/4" HOLE – STEEL SERIES F TRACK FOR FLUSH MOUNTING IN FLOOR**



2005S

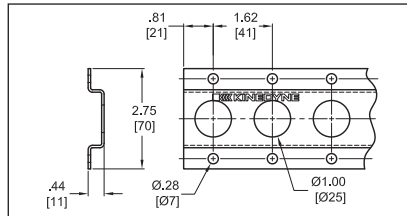


**Material:** Steel  
**Finish:** Natural  
**Weight:** 9.2 lbs./4.2 kgs.  
**Length:** 10 ft./3 m

**1" HOLE GALVANIZED SERIES F TRACK**



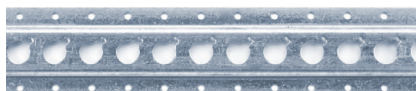
1805



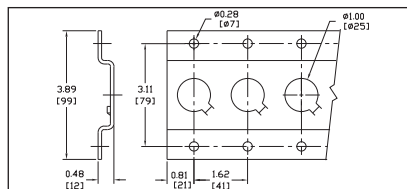
**Material:** High strength steel; 15 gauge  
**Finish:** Galvanized  
**Weight:** 6.2 lbs./2.8 kgs.  
**Length:** 10 ft./3 m

**WARNING:** Welding galvanized material will form toxic fumes. Welding shall be done with adequate ventilation.

**1" HOLE – NOTCHED – GALVANIZED SERIES F-TRACK**



1806



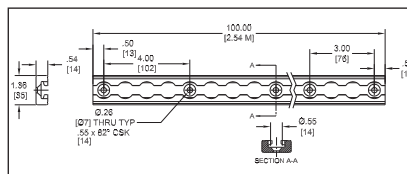
**Material:** High strength steel; 12 gauge  
**Finish:** Galvanized  
**Weight:** 12.5 lbs./5.7 kgs.  
**Length:** 10 ft./3 m

**WARNING:** Welding galvanized material will form toxic fumes. Welding shall be done with adequate ventilation.

**MEDIUM-DUTY SERIES L TRACK AND MOUNTING HOLES**



FE750-01-PD4

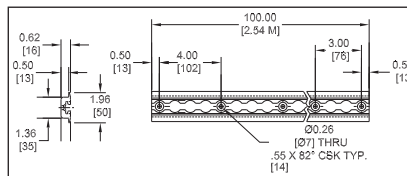


**Material:** Aluminum  
**Finish:** Natural  
**Weight:** 5.0 lbs./2.3 kgs.  
**Length:** 100 in./2.5 m



**MEDIUM-DUTY SERIES L TRACK WITH FLANGES AND MOUNTING HOLES**

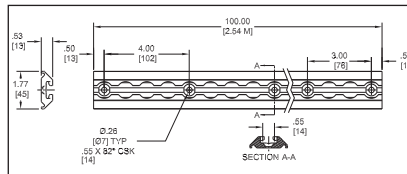
FE751-01-PD4



**Material:** Aluminum  
**Finish:** Natural  
**Weight:** 5.2 lbs./2.4 kgs.  
**Length:** 100 in./2.5 m

**MEDIUM-DUTY SERIES L TRACK ANGLED AND MOUNTING HOLES**

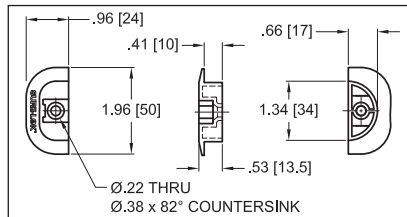
FE752-01-PD4



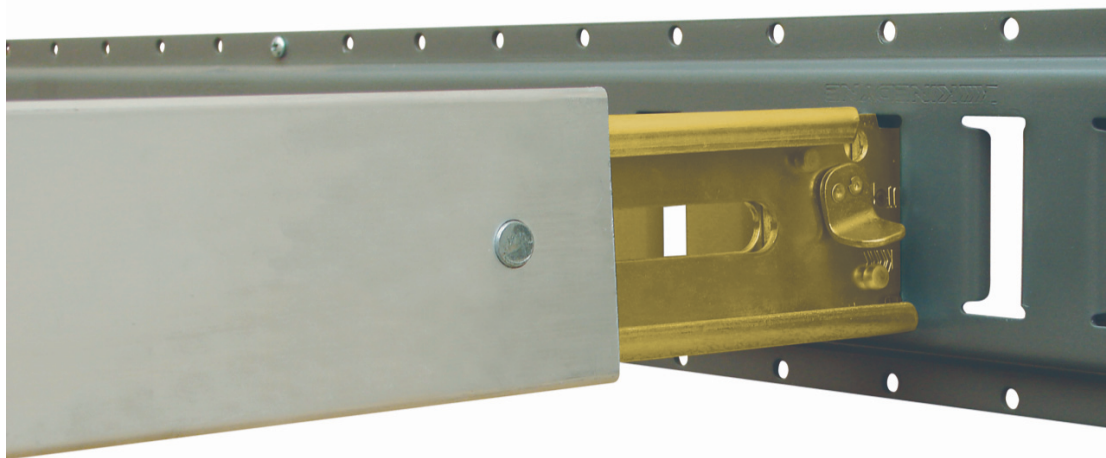
**Material:** Aluminum  
**Finish:** Natural  
**Weight:** 5.2 lbs./2.4 kgs.  
**Length:** 100 in./2.5 m

**L TRACK END CAP**

8663



For use with Series L Aluminum Flanged Track and FE751-01-PD4 Series L Track.

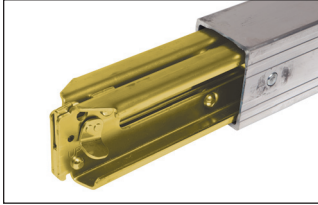
**DECKING/SHORING BEAMS**

All Kinedyne Series FE8000 & FE8066 Aluminum Decking/Shoring beams include a KwikLatch beam header release mechanism.

**WARNING:** Series E or A fittings are designed for use with Kinedyne Logistic Track. Load ratings may be reduced when used with other tracks or if the track fitting is not positively engaged. Your cargo control system is only as strong as its weakest link. Do not overload beams or create a top-heavy, unstable trailer. Do not exceed stated Working Load Limits of Beams. Dynamic loads must be considered to avoid possible overload of system. Actual pallet load supported by the beams in a decking application must not exceed 50% of the stated Working Load Limit to allow for dynamic loads during transit.

## SERIES E OR A ALUMINUM BEAMS

Kinedyne FE8066 series aluminum decking/shoring beams are made from extruded high strength aluminum, designed to give maximum strength at the least possible weight. Head assemblies are all steel, zinc plated and come standard with Kinedyne's KwikLatch release and ergonomic finger tab.



NOTE: FE8066 067-078 is available for use in Shipping Containers



**FE8066-1**  
Adjusts from: 85.6" to 95.0" for 96" Trailers **Weight:** 19.5 lbs./8.9 kgs.

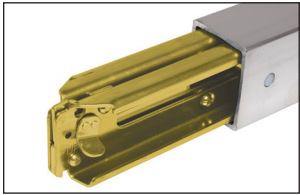
**FE8066-3**  
Adjusts from: 92.9" to 102.3" for 96" and 102" Trailers **Weight:** 18.8 lbs./8.5 kgs.

**FE8066-3XL**  
Adjusts from: 97.2" to 106.6" for 102" High Cube Trailers **Weight:** 21.0 lbs./9.5 kgs.

**Decking/Vertical Rating:** 2,200 lbs./1000 kgs. working load limit based on evenly distributed load.  
**Shoring/Horizontal Rating:** 2,000 lbs./910 kgs. working load limit based on evenly distributed load.

## HEAVY-DUTY SERIES E OR A ALUMINUM BEAMS

Kinedyne FE8000 series heavy-duty aluminum decking/shoring beams are made from extruded high strength aluminum which has 25% more aluminum than the standard beam for added strength and durability. Head assemblies are all steel, zinc plated and come standard with Kinedyne's KwikLatch release and ergonomic finger tab.



**FE8000-1**  
Adjusts from: 85.6" to 95.0" for 96" Trailers **Weight:** 21.5 lbs./9.8 kgs.

**FE8000-12**  
Adjusts from: 92.9" to 102.3" for 96" and 102" Trailers **Weight:** 22.3 lbs./10.1 kgs.

**FE8000-12XL**  
Adjusts from: 97.2" to 106.6" for 102" High Cube Trailers **Weight:** 23.0 lbs./10.4 kgs.

**Decking/Vertical Rating:** 3,000 lbs./1360 kgs. working load limit based on evenly distributed load.  
**Shoring/Horizontal Rating:** 2,500 lbs./1135 kgs. working load limit based on evenly distributed load.

## EXTRA HEAVY-DUTY ALUMINUM BEAMS

Kinedyne FE8050 series extra heavy-duty aluminum decking/shoring beams are designed for the most severe applications. The beams are extruded high-strength aluminum and have 70% more aluminum than the heavy-duty beam for added strength and durability.

NOTE: Special length beams are available.



**FE8050-6**  
Adjusts from: 88.0" to 97.7" for 96" Trailers **Weight:** 32.5 lbs./14.8 kgs.

**FE8050-5**  
Adjusts from: 92.9" to 102.6" for 96" and 102" Trailers **Weight:** 33.0 lbs./15.0 kgs.

**Decking/Vertical Rating:** 4,000 lbs./1814 kgs. working load limit based on evenly distributed load.  
**Shoring/Horizontal Rating:** 3,000 lbs./1360 kgs. working load limit based on evenly distributed load.

## SERIES E STEEL BEAMS

Kinedyne 1866 series steel decking/shoring beams are made from high strength galvanized 2" x 3" rectangular welded steel tubing. Head assemblies are all steel, zinc plated and tapered for ease of operation. Trigger and spring are built for long-lasting positive lock control.



**1866** – For 96" and 102" Trailers  
For inside trailer width of: 92" to 103" **Weight:** 26.0 lbs./11.79 kgs.

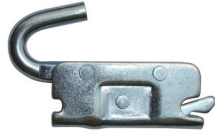
**Decking/Vertical Rating:** 2,000 lbs./909 kgs. uniformly distributed working load limit.  
**Shoring/Horizontal Rating:** 1,350 lbs./680 kgs. uniformly distributed working load limit.



## BEAM PARTS & ACCESSORIES



**80007**  
Kwik Latch Beam Head assembly. Replacement for FE8000 and FE8066 series beams only.



**80023**  
E-Key fitting



**FE7053-1**  
Attaching Pin for Aluminum Beams.

**1866-2**  
Attaching Pin for Series 1866 Steel beams.  
Weight: 0.1 lbs./0.0 kgs.



**FF877HD** –  
Trigger Repair Kit  
Use on FE7955-8HD head only.



**1866-8** – Beam Head assembly. Replacement for 1866 beams only.  
Weight: 3.3 lbs./1.5 kgs.

**FE7955-8HD** –  
Beam Head assembly. Replacement for FE8050 series beams only.  
Weight: 4.7 lbs./2.1 kgs.

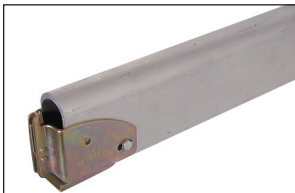
E-Key Fitting (Item# 80023) provides method to store beams on logistic track.



## GARMENT BARS

### STANDARD GARMENT BAR

This bar is specially designed for carrying garments on hangers suspended from rope loops in closed trailers. Its rounded top reduces wear of the suspension ropes. The beams are made of extruded high-strength aluminum with two 1845 standard beam sockets.



**1846-96**  
Adjusts from: 90.6" to 92.7" for 96" Trailers  
Weight: 14.0 lbs./6.1 kgs.

**1846-102**  
Adjusts from: 98.1" to 100.2" for 102" Trailers  
Weight: 14.7 lbs./6.7 kgs.

**1846-102XL**  
Adjusts from: 99.1" to 101.2" for 102" High Cube Trailers  
Weight: 14.8 lbs./6.7 kgs.

Vertical Rating: 2,000 lbs./910 kgs. working load limit based on evenly distributed load.

## SHORING BARS



Kinedyne offers a complete line of shoring bars for use with 3/4" and 1" hole diameter Series F logistic track.

**⚠ WARNING:** Shoring bars should never be used in decking applications. Use of a shoring bar in a decking application can lead to a failure of your cargo control system. When Series F bars are used in the vertical position, the spring end of the bar must be up to avoid bouncing out of the track.

### SERIES F ROUND SHORING BARS WITH PUSH-BUTTON ADJUSTMENT

The 1816 series 1.66" diameter round shoring bars are made of galvanized steel tubing. The bars have a spring-loaded end that adjusts 5". Additional 4" increments of adjustment can be made with the easy to use push-button mechanism.

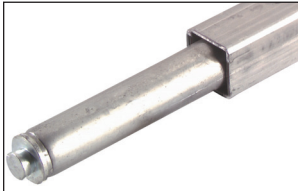


- |  |                                    |
|--|------------------------------------|
| <b>1816-1</b> – 3/4" Hole/Adjusts from: 79" to 93"   | <b>Weight:</b> 14.5 lbs./6.6 kgs.  |
| <b>1816-2</b> – 3/4" Hole/Adjusts from: 92" to 106"  | <b>Weight:</b> 16.5 lbs./7.5 kgs.  |
| <b>1816-3</b> – 3/4" Hole/Adjusts from: 100" to 114" | <b>Weight:</b> 18.4 lbs./8.4 kgs.  |
| <b>1816-1C</b> – 1" Hole/Adjusts from: 79" to 93"    | <b>Weight:</b> 15.7 lbs./7.13 kgs. |
| <b>1816-2C</b> – 1" Hole/Adjusts from: 92" to 106"   | <b>Weight:</b> 17.6 lbs./8.0 kgs.  |

Shoring/Horizontal or Vertical Rating: 500 lbs./230 kgs. uniformly distributed working load limit.

### SERIES F SQUARE SHORING BARS WITH PUSH-BUTTON ADJUSTMENT

The 1818 series 1.5" square shoring bars are made of heavy wall galvanized steel tubing. The bars have a spring-loaded end that adjusts 5". Additional 4" increments of adjustment can be made with the easy to use push-button mechanism.

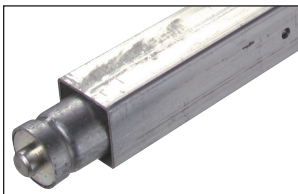


- |  |                                   |
|--|-----------------------------------|
| <b>1818-1</b> – 3/4" Hole/Adjusts from: 81" to 95"   | <b>Weight:</b> 16.4 lbs./7.4 kgs. |
| <b>1818-2</b> – 3/4" Hole/Adjusts from: 94" to 108"  | <b>Weight:</b> 18.3 lbs./8.3 kgs. |
| <b>1818-3</b> – 3/4" Hole/Adjusts from: 102" to 116" | <b>Weight:</b> 20.0 lbs./9.1 kgs. |
| <b>1818-2C</b> – 1" Hole/Adjusts from: 94" to 108"   | <b>Weight:</b> 18.3 lbs./8.3 kgs. |

Shoring/Horizontal or Vertical Rating: 500 lbs./230 kgs. uniformly distributed working load limit.

### HEAVY-DUTY SERIES F SQUARE SHORING BARS

The FE7495 series 2" square shoring bars are made of heavy wall steel tubing with zinc plated finish. The bars have a spring-loaded end that adjusts 4". Additional 2" increments of adjustment can be made by removing the roll pin, realigning the pin holes and replacing the pin.



- |   |                                    |
|---|------------------------------------|
| <b>FE7495-1</b> – 3/4" Hole/Adjusts from: 79.5" to 95.5"  | <b>Weight:</b> 20.8 lbs./9.5 kgs.  |
| <b>FE7495-3</b> – 3/4" Hole/Adjusts from: 88.5" to 104.5" | <b>Weight:</b> 22.8 lbs./10.4 kgs. |
| <b>FE7495-1C</b> – 1" Hole/Adjusts from: 79.5" to 95.5"   | <b>Weight:</b> 21.5 lbs./9.8 kgs.  |
| <b>FE7495-3C</b> – 1" Hole/Adjusts from: 88.5" to 104.5"  | <b>Weight:</b> 23.2 lbs./10.5 kgs. |

Shoring/Horizontal or Vertical Rating: 1,000 lbs./455 kgs. uniformly distributed working load limit.



## SERIES F BARS FOR VERTICAL SHORING APPLICATIONS

Primarily For Use In Door and Sash Applications

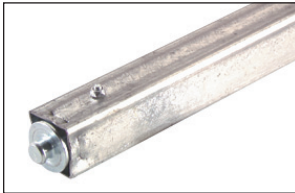
The 1814 round and 1815 square shoring bars are made of galvanized steel tubing. The bars have a spring-loaded end that adjusts 8". Additional 2" increments of adjustment can be made with the easy to use push-button mechanism.



**1814** – 3/4" Hole/Adjusts from: 86.0" to 116.0"  
Round

**Weight:** 19.1 lbs./8.7 kgs.

**Shoring/Horizontal or Vertical Rating:** 500 lbs./230 kgs.  
Uniformly distributed working load limit.



**1815** – 3/4" Hole/Adjusts from: 86.0" to 116.0"  
Square

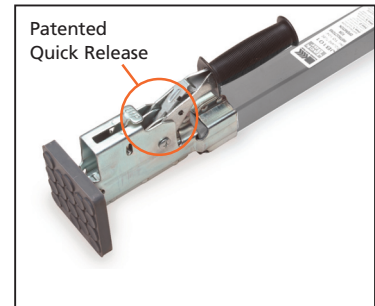
**Weight:** 25.5 lbs./11.6 kgs.

**Shoring/Horizontal or Vertical Rating:** 750 lbs./340 kgs.  
Uniformly distributed working load limit.

## JACK BARS

Kinedyne Jack Bars feature a patented quick-release handle assembly which allows the operator to quickly adjust the length of the bar.

Many other jack bars on the market use a release that does not allow for easy adjustment of the bar. The only way to change the length is to 'ratchet' the handle assembly by hand to adjust the length in short increments, a time consuming and tedious process at best.



NOTE: U.S. Patent Number 5,979,876

**WARNING:** Jack Bars should not be used with cargo on wheels. Cargo on wheels exerts more force when it shifts during movement and can cause friction type cargo bars to fail. Only use positive engagement shoring bars, beams, or straps to secure cargo on wheels. Overtensioning of ratchet mechanism may cause damage to trailer sidewalls. Cargo bars do not have load ratings due to varying conditions of trailer sidewalls.

## SQUARE ONE-PIECE JACK BARS – GALVANIZED

The JB101 jack bars are constructed of square steel tubing.



**JB101** – Adjusts from: 86.0" to 104.0"  
Standard Rack

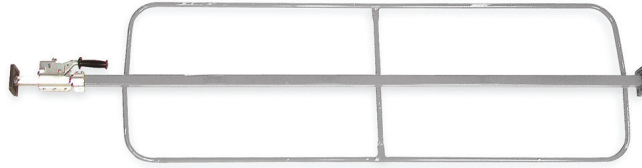
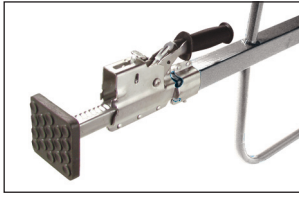
**Weight:** 17.0 lbs./7.7 kgs.

**JB101XL** – Adjusts from: 86" to 114"  
Extra Long Rack

**Weight:** 17.2 lbs./7.8 kgs.

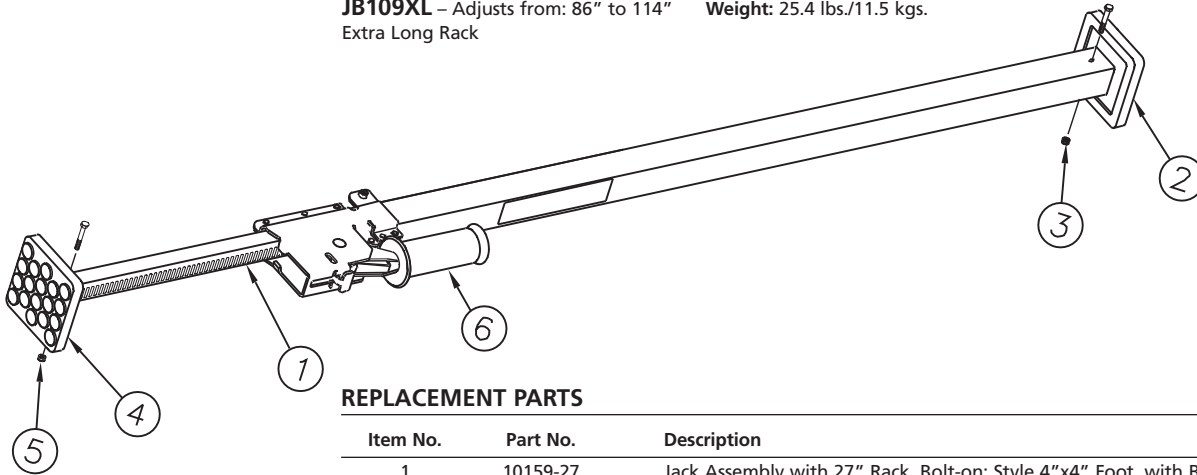
## SQUARE ONE-PIECE JACK BAR – GALVANIZED WITH WELDED HOOP SETS

The JB109 square jack bars are constructed of heavy wall steel tubing.



**JB109** – Adjusts from: 86.0" to 104.0"    Weight: 24.7 lbs./11.2 kgs.  
Standard Rack

**JB109XL** – Adjusts from: 86" to 114"    Weight: 25.4 lbs./11.5 kgs.  
Extra Long Rack



### REPLACEMENT PARTS

Item No.	Part No.	Description
1	10159-27	Jack Assembly with 27" Rack, Bolt-on; Style 4"x4" Foot, with Bolt and Nut
1	10159-37	Jack Assembly with 37" Rack, Bolt-on; Style 4"x4" Foot, with Bolt and Nut
2	10121	4"x4" Bolt-on Foot for Large Tube End
3	10121-1	Bolt and Nut for Large Tube End
4	10123	4"x4" Bolt-on Foot for Jack Assembly End
5	10123-1	Bolt and Nut for Jack Assembly End
6	10157	Handle Grip
-	10146	Weld-on Foot Pad

## RETRACT-A-BAR

3 adjustment sizes for multiple applications. Easily stores which prevents theft. Heavy duty construction of a Jackbar with operation ease of a load lock.



**80131** – Retracts from 107" to 54" in three adjustment settings:

- 1) 54" – 68"
- 2) 68" – 82"
- 3) 92" – 107"



## SAF-T-LOK BARS

Kinedyne's Saf-T-Lok bars are designed for economy and ease of operation. These bars are offered in high strength tubing. Features include a steel rack, a heavy-duty steel handle and a painted cast aluminum housing. Molded pivoting rubber feet grip firmly to trailer walls, yet won't scuff and will remain pliable even at low temperatures. The handle and trigger release are easy to operate, even with gloved hands.

**WARNING:** Saf-T-Lok Bars should not be used with cargo on wheels. Cargo on wheels exerts more force when it shifts during movement and can cause friction type cargo bars to fail. Only use positive engagement shoring bars, beams or straps to secure cargo on wheels. Overtensioning of the rack mechanism may cause damage to trailer sidewalls. Cargo bars do not have load ratings due to varying conditions of trailer sidewalls.



**10085**  
Steel

Adjusts from: 90" to 105"  
Weight: 11.4 lbs./5.18 kgs.

**10085XL**  
Steel

Adjusts from: 97" to 113"  
Weight: 11.9 lbs./5.41 kgs.

**10088**  
Aluminum

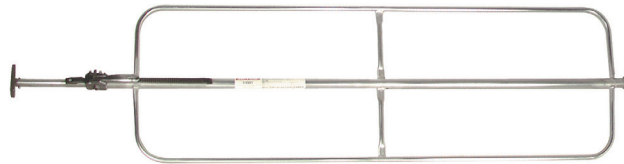
Adjusts from: 90" to 105"  
Weight: 8.5 lbs./3.9 kgs.

Kinedyne's Cargo Hoop Set (part #10096, page 49) available for use with Saf-T-Lok bars to provide a greater area of holding surface.



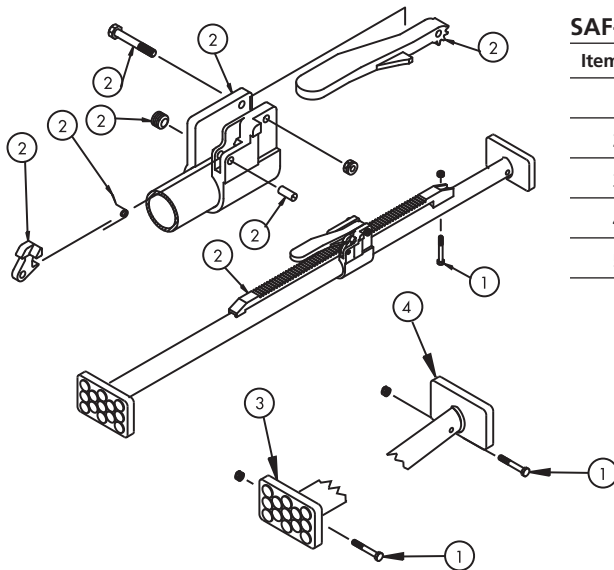
## SAF-T-LOK BARS – GALVANIZED STEEL TUBE WITH WELDED HOOP SETS

Constructed of heavy wall galvanized steel tubing for increased strength and durability, Saf-T-Lok bars with welded hoop sets are ideal for shoring applications that require a larger holding surface area.



**10081**  
Adjusts from: 90" to 105"  
Weight: 23.8 lbs./10.8 kgs.

## REPLACEMENT PARTS



### SAF-T-LOK BAR REPLACEMENT PARTS

Item No.	Part No.	Description
1	10122	Nut and Bolt for Feet
2	10125-31	Handle, Rack and Housing, with Nut and Bolt
3	10052	Bolt-on Foot for Large Tube
4	10053	Bolt-on Foot for Small Tube/Rack
5	10134	Small Tube with 2 Holes